



Petram Series, Category 6 Keystone Jack, Shielded

Description

Keystone jack is applied to data network communication, telecommunication room and work area with patch panel or desk box.

Features & Benefits

- Meet and exceed Category 6 component and channel performance
- Optional back designs for different applications
- Fast and toolless termination
- 360° fully shielded design to effectively prevents EMI
- Outstanding electrical performance
- Reliable grounding
- No cable tie required

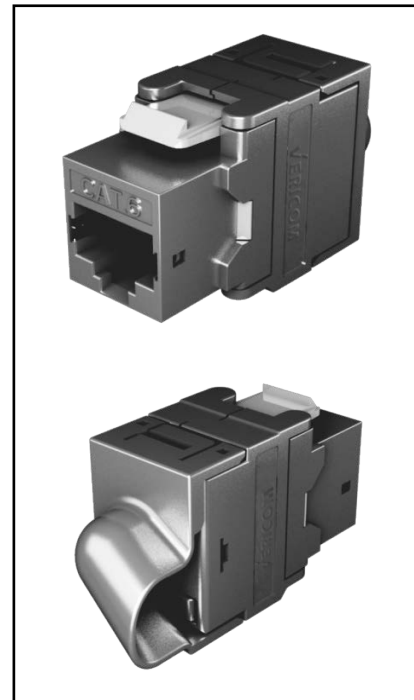
Compliance & Standards

- ANSI/TIA/EIA-568.2-D Category 6
- ISO/IEC 11801 Class E

Physical Performance

IDC	Phosphor Bronze
RJ45 Pin	Phosphor Bronze With 50u" Gold Plating
Plug Insertion	≥1000 times
IDC Insertion Life Span	≥250 times
AWG	22~26AWG
Wiring	T568A/T568B

Drawing





Petram Series, Category 6 Keystone Jack, Shielded

Electrical Performance

Dielectric Strength	DC 1000V(AC750V) 1min, No Breakdown and Arcing Phenomena
DC Resistance	$\leq 300\text{m}\Omega$
Connecting Resistance	$\leq 20\text{m}\Omega$
Insulation Resistance	Under Normal Atmospheric Pressure $\geq 500\text{M}\Omega$

Ordering Information

Part No.	Product Name	Description
KJ6201	Category 6 Shielded Keystone Jack Type B	Angled Cable Exit for Wall/Face Plate
KJ6202	Category 6 Shielded Keystone Jack Type C	Open Cable Exit for Ground Socket
KJ6203	Category 6 Shielded Keystone Jack Type A	Retention Compression Collar for Patch Panel